

Understanding the Other LEDs

	<ul style="list-style-type: none"> ▶ Green, steady: The unit is on. ▶ Green, blinking: The unit is in Sleep or Hibernation mode.
	<ul style="list-style-type: none"> ▶ Green: The unit is working properly and is ready. ▶ Green, blinking: The initialization of the unit is underway. ▶ Yellow: Non-critical hardware error detected. ▶ Red: Critical hardware error detected.
	<ul style="list-style-type: none"> ▶ Lit: Reading or writing operations are currently performed on the hard disk.

Removing Modules

Press to prepare the corresponding module for safe removal.
 OR
 From ToolBox X, click the button.

1



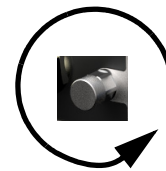
2

Wait for the H/S LED to turn steady blue.



CAUTION

If your unit is on, wait until the status of the module switches to "Safe to Remove" in ToolBox X, or the H/S LED turns steady blue on the unit's front panel



3

Turn the two retaining screws counterclockwise until they are loose (do not remove them completely).

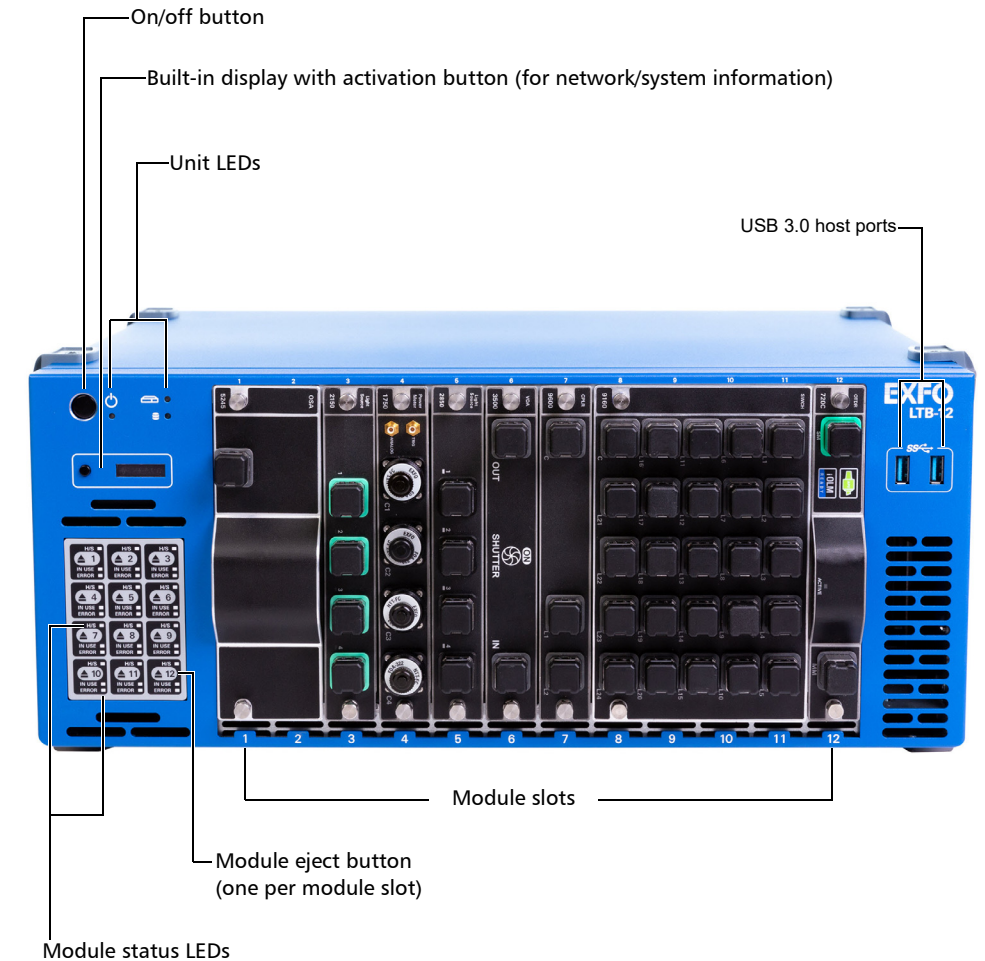


Retaining screws
 (can be used as handles to safely pull the module out)

4

Hold the module by its sides or by the retaining screws (NOT by the optical connectors) and pull it out.

Accessing Connectors and Ports



Configuring Your Unit At First Startup

1 From a computer (laptop), go to <http://www.exfo.com/software/exfo-apps>.



2 Under **PC Software**, look for the AMT Remote Access application, and download it.

3 Double-click the file that you have just downloaded to start the installation, and follow the on-screen instructions.



4 Connect the provided power cord to the unit and a power outlet.

5 Flip the main power switch to the On position.

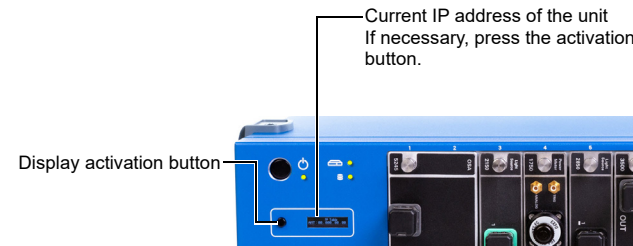
6 Connect one end of a network cable to the management port of the unit (🔌) and the other end to an Ethernet port of the computer.



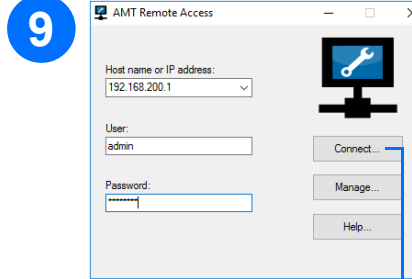
Press to turn the unit on.



8 On the computer, start the AMT Remote Access application.



Enter the connection information:
The default static IP address is: 192.168.200.1. The IP address is also visible from the built-in display on the front of the unit.
The default user name is: admin.
The default password is: !Exfo123.



Click to have access to the unit and the applications exactly as if you were in front of the unit with a monitor, a keyboard, and a mouse connected to it.

Note: You may have to modify the IP address of the computer to make sure that the computer and unit can “see” each other. The IP address of the computer must be within the same range of addresses as the IP address of the unit (ex.: 192.168.200.20).

Note: If several units are connected to the same network with the default static IP address, you may have to modify the IP addresses of these units to avoid connection problems (not accessing the right unit).

11 Follow the on-screen instructions. The user documentation will be accessible during the setup.

Inserting Modules



CAUTION

To avoid damaging your unit, use it only with modules approved by EXFO (refer to the unit’s technical specifications).

1 Place the module vertically so that the connector pins are at the back, and the protruding edges are on the left.

2 Insert the protruding edges of the module into the grooves and push all the way to the back.

Note: There is no need to turn off your unit before inserting a module.



3 Turn the two retaining screws clockwise to secure the module in place. Its faceplate should be flush with the front panel of the unit.

Understanding the Module Status LEDs



H/S (blue LED)

- ▶ Blinking: The module is in a transition state (being prepared for removal, or being detected by the system).
- ▶ Steady: The module can be removed safely.

IN USE (green LED)

- ▶ Blinking: A test or a measurement, using the module, is underway.
- ▶ Steady: The module is in use.

ERROR (red LED)

- ▶ Steady: The module is in error.