

ADDENDUM

This information applies only to the AXS-200/620/625/630/635/650 Triple-Play Test Sets user guides.

HPNA Tests Software Option for DSL/IP Tests

With the introduction of the ARU-100 HPNA Test Probe, a new test software option is available for any AXS-600 series module (except the AXS-200/610) providing HPNA to Ethernet network tests, performance measurement tools and results. The HPNA tests software option enables your AXS-600 series module to interface with the ARU-100 to validate triple-play services by leveraging existing coax cable in the home network environment.

Note: *The following additional parameter options can be found in the **Connection Setup** function for DSL/IP tests.*

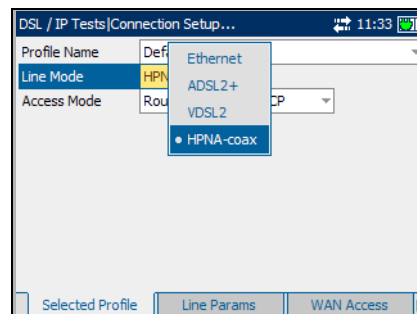
Selected Profile

The **Selected Profile** tab allows you to configure and store multiple profiles containing specific setups for the unit. The default settings for current profile are: **Profile Name** is **Default**; **LineMode** is **Ethernet**; and **AccessMode** is **Bridged**.

➤ **Profile Name** is a list of all available profile files in the current directory with the first entry being **Default**. Once you open the selected profile, it remains active in the unit until a different or newer profile is selected. You can store over 100 profiles.

➤ **Line Mode** is **Ethernet**, **ADSL2+**, **VDSL2**, or **HPNA-coax**. If you select the **HPNA-coax Line Mode**, verify that the ARU-100 HPNA test probe is connected to the WAN port of your AXS-600 series module.

➤ **AccessMode** displays a list of values dependent on the **Line Mode** selection.

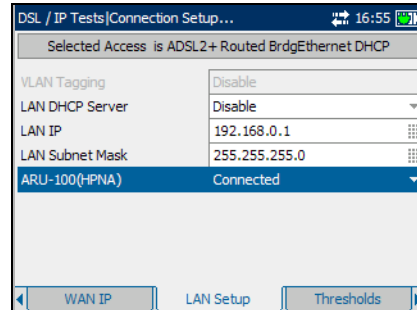


LAN Setup

The **LAN Setup** tab allows you to configure the parameters required when working in *Throughmode*, and the local area network (LAN) is connected to the ethernet interface. These parameters apply only when the WAN access mode is set to **Routed**. The described **Selected Profile** is composed of the current **LineMode** and **AccessMode** selections.

The available parameters are the following:

- **VLAN Tagging** enables the unit to recognize frames with a specified PVID. This entry is disabled if **VLAN Support** is set to **Disable** on the **WAN Access** pane.
- **LAN DHCP Server** enables the dynamic host configuration protocol (DHCP) mode for the LAN side of the connection.
- **LAN IP** is the local network IP address of the unit.
- **LAN Subnet Mask** is the network address mask used to identify if the IP address is within the same local area network.
- **ARU-100(HPNA)** enables you to be **Connected** or **Disconnected** from the HPNA test probe. **Connected** allows monitoring of **HPNA Info** in a triple-play application. The entry is only visible with the HPNA software option and if **Line Mode** selected is *not* **HPNA-coax**.

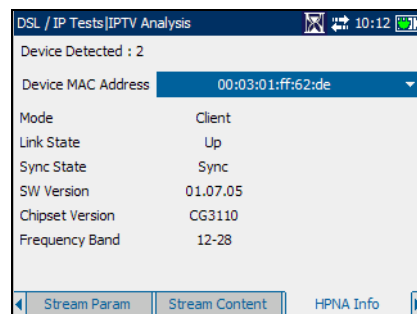


Note: The following new HPNA results tabs are now available for all DSL/IP tests.

HPNA Info

The **HPNA Info** tab allows you to view the results of the HPNA devices detected on the network.

- **Device Detected** displays the total number of detected HPNA devices on the network.
- **Device MAC Address** lists all the MAC addresses for the detected HPNA devices.
- **Mode** displays **Master** or **Client** for the selected device.
- **Link State** is the **Up** to **Down** (or vice versa) routing protocol of the network link for the selected device.
- **Sync State** is the sync status of the selected device.
- **SW Version** is the software version number of the selected device.



- **Chipset Version** is the version number of the chipset for the selected device.
- **Frequency Band** displays the range of signal frequency for the selected device.

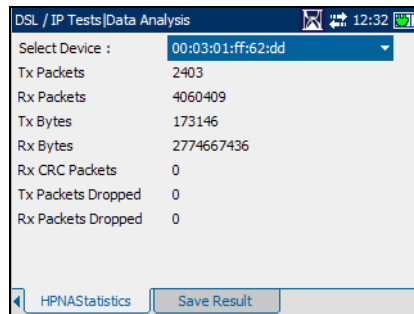
To select a detected device:

1. Press ✓ to open the list.
2. In the list, press the up/down arrows to select the MAC address of the desired device.
3. Press ✓ to confirm the selection and view the results.

HPNA Statistics

The **HPNA Statistics** tab allows you to view counter statistics of the selected HPNA device.

- **Select Device** lists all the MAC addresses of the detected HPNA devices on the network.



- **Tx Packets** is the number of packets sent.
- **Rx Packets** is the number of packets received.
- **Tx Bytes** is the count of bytes sent.
- **Rx Bytes** is the count of bytes received.
- **Rx CRC Packets** is a count of cyclical redundancy check (CRC) errors received.
- **Tx Packets Dropped** is the number of outgoing packets dropped.
- **Rx Packets Dropped** is the number of incoming packets dropped.

To select a MAC address:

1. Press ✓ to open the list.
2. In the list, press the up/down arrows to select the MAC address of the desired device.
3. Press ✓ to confirm the selection and view the test results.