

# Upgrading to 64G FC just got faster and easier!

Industry's first compact, portable 64G Fibre Channel test solution\*

Available on EXFO's  
FTBx-88480 and FTBx-88482

EXFO's 64G Fibre Channel test solution helps test engineers in the lab ensure that new switches and transceivers are up and running reliably. When paired with the latest FTB-1 Pro platform, it's the industry's first compact, portable 64G Fibre Channel tester. Available on the **FTBx-88480** and **FTBx-88482 400G testers**.



## Fabric-login feature

Enables the exchange of service parameters with a fabric switch, and ultimately access to the fabric in order to reach the targeted node.



## Buffer-to-buffer credit estimation measurement

Allows for flow-control management by estimating the amount of memory buffers that must be configured at each node for optimal operation of the network.



## Round-trip latency tests

Calculates the lag introduced by the presence of the interconnection device.



### FTBx-88480 Series

Test multiple technologies (Ethernet, OTN, DCO and more), rates (1G-400G) and interfaces (SFP, SFP+, SFP28, SFP-DD, QSFP28, QSFP-DD and OSFP) all on the same platform—no stacking of modules.



From the communications industry's test, monitoring and analytics experts.

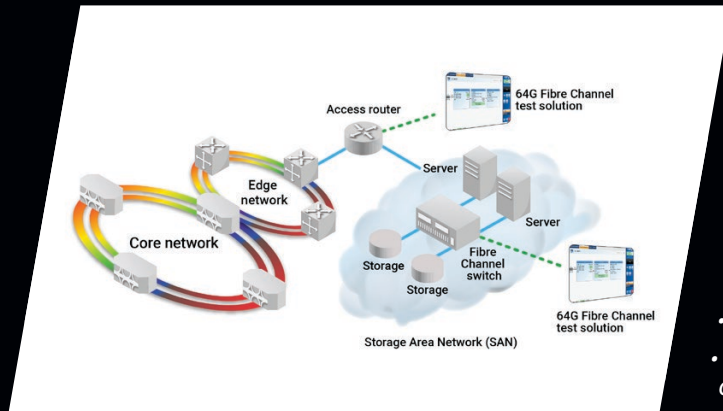
Get more information or request a quote: [isales.global@EXFO.com](mailto:isales.global@EXFO.com)  
[EXFO.com/en/FTBx-88480](https://EXFO.com/en/FTBx-88480)

\* When combined with the latest FTB-1 Pro portable platform.

# EXFO

# Industry's first compact, portable 64G Fibre Channel tester\*

Applications



## Transport networks

The most common Fibre Channel deployment topology is a switched network called a fabric. This topology allows the connection of millions of devices (i.e., end nodes).

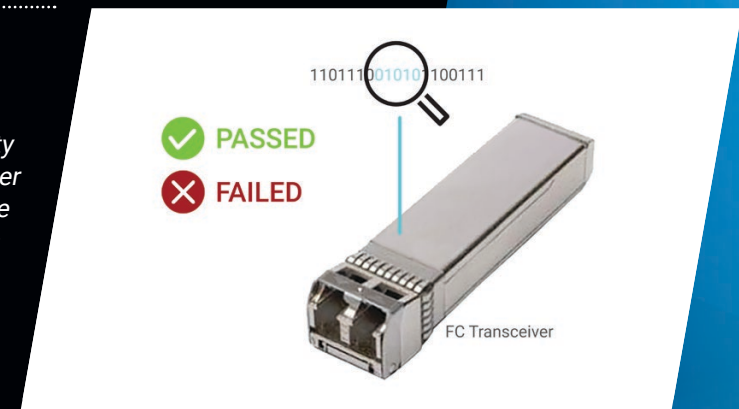
EXFO's 64G Fibre Channel test solution tests end nodes using the same features as those used for interconnection devices. Features include:

- Fabric login: enables the exchange of service parameters with a fabric switch
- Buffer-to-buffer credit estimation: credit estimation based on latency
- Service disruption time: last, shortest, longest, average and total time of service disruptions on the fabric

## Transceiver validation

High-speed technologies, such as Fibre Channel, continue to evolve at a fast pace. At the same time, transceivers must quickly adapt and meet strict quality and reliability standards to function accurately in today's demanding data center and Fibre Channel storage networks. With EXFO's 64GFC test solution's intuitive GUI, manufacturers can quickly identify if a transceiver meets design standards before integration into live network environments. Features include:

- Bit error rate testing with different PRBS patterns
- Frequency offset: indicating frequency and the offset between the standard rate specification and the rate of the input signal.
- Multiple alarms and error monitoring



Get more information or request a quote: [isales.global@EXFO.com](mailto:isales.global@EXFO.com)  
[EXFO.com/en/FTBx-88480](https://EXFO.com/en/FTBx-88480)

\* When combined with the latest FTB-1 Pro portable platform.

# EXFO