



EPXAM PRO GRAPHICAL USER INTERFACE

EPXam™ is gnubi's™ proven browser-based graphical user interface. Set up and monitor tests remotely by simply opening a web browser and logging in to the test system.

EPXam Pro™ includes all the functionality of EPXam, plus features to make telecom testing easier:

- Data graphs and tables
- Enhanced scripting
- Increased number of connections (10)

EASY TO USE

EPXam provides flexibility for managing all aspects of the test system. Use centralized tools such as the Group Manager, Test Controls, Logging Controls, and Save/Restore Controls to manage testing for multiple modules simultaneously. Open module detail windows to set up and run tests, and view detailed performance data.

Integrated SCPI Monitor, SCPI Commander, and Script Runner tools provide convenient access to the test system's command-line interface for creating, debugging, and running scripts.

TEST DATA VIEWS

With EPXam Pro, you can save test data to your local computer or to the test system. Plus, see your test data in graphs or tables, either from currently running tests or saved log files.

INTERACTIVE TESTING

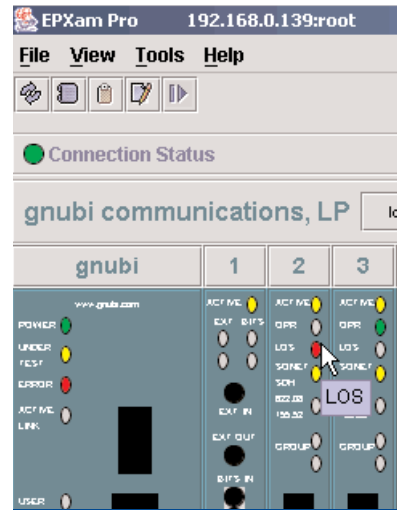
EPXam Pro makes it easy to modify tests and to monitor test data to confirm the results. As shown below, run a script and watch live test data being graphed while the test is running. See a demonstration at www.gnubi.com/gui.

FLEXIBLE ACCESS

Like other gnubi products, EPXam Pro is expandable. Use EPXam Pro with any gnubi chassis or test modules currently available or released in the future.

UPGRADABLE

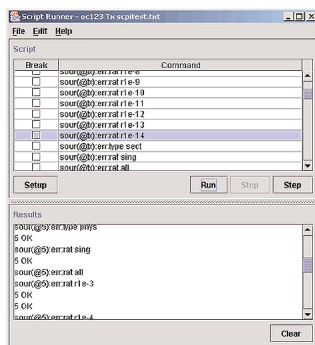
As new features are developed for gnubi's test modules, download the upgrades from our website. Visit www.gnubi.com to learn about the latest features and upgrades.



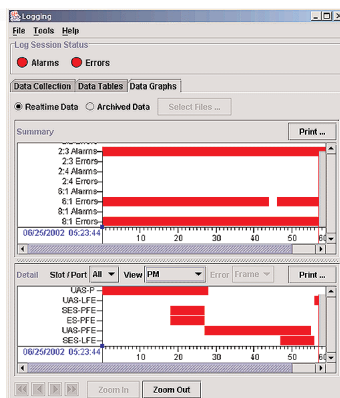
Features

- View test data in graphs and tables
- Remote access
- Open up to 10 simultaneous connections
- Manage concurrent tests with centralized, integrated controls
- Reserve modules for tests with the Group Manager
- Customize the main window display to save screen space
- Check current module test data and status for any or all modules from the main window
- Resume testing without loss of data after a power interruption with Checkpoint/Resume
- Switch between SONET and SDH without restarting the system.
- Write and run SCPI scripts without knowing a programming language
- See what commands EPXam uses to easily write scripts
- Define network addresses, system data and time, and RS-232 port settings
- Identify features with tool tips and online help

Run test scripts . . .



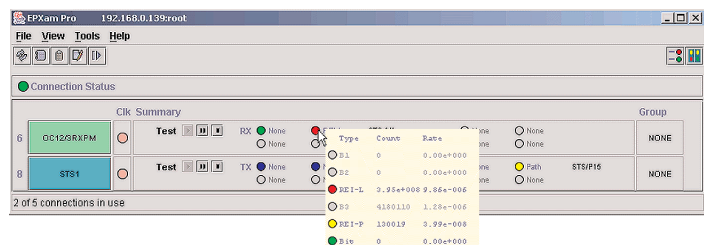
and see the data updated live



Features

EPXam Graphical User Interface

Access	Remote access	Web browser applet or locally installed client application
	Connections	Up to 10 simultaneously; configurable
Centralized Controls		Control multiple modules or groups
		Log and view test data
		Toolbars and menus for one-click access to tools
		Start and stop tests Save and restore module configurations
Logging	Storage	Local computer or gnubi's test system
	Display	Bar graphs or tables By slots or defect types
	Data	Real-time data or saved data from one or more tests
	Power interruption	Resume logging with minimal data loss with Checkpoint/Resume
Display Options	Orientation	Logical view or physical representation of chassis
	Detail level	Compact, Normal, or Expanded views View a summary of all tests and modules in Expanded view
	Module display	Show/hide empty slots; show list or range of slots
Scripts	Format	Plain text files
	Features	Loops, timed waits, slot variables (for easy reuse)
	Functions	Create, save, open, and run scripts
Group Management	Access	Create groups of modules for testing Reserve group modules for your use only
	Control	Select groups for logging and test controls
Tools		Save/Restore, Script Runner, SCPI Monitor, SCPI Commander, EPX Setup, Group Manager, Logging, SONET/SDH Switcher, Test Controls, Checkpoint/Resume History
SONET/SDH Switching		Switch between SONET and SDH without restarting the test system
	Modules	OC-12/3 STM-4/1 Transmitter and Receiver OC-48 STM-16 Transceiver, Transmitter, and Receiver OC-192 STM-64 Transmitter and Receiver
Supported Platforms	Windows	9x/Me/NT 4.0 (Service Pack 5)/2000
	Solaris	2.5, 7, or 8
System Requirements	Web browser applet	Netscape Navigator 4.7 or 6, or Internet Explorer 5.5 or later Java Runtime Environment (JRE) with plugin 256 MB RAM (recommended)
	Client application	Disk space: 30 MB (Windows), 60 MB (Solaris) 256 MB RAM (recommended)



© 2002 gnubi communications, L.P. All rights reserved.
gnubi, the gnubi logo, EPX, EPXam, EPXam Pro, EPX8, EPX16 and TransPort are trademarks of gnubi communications, L.P. All rights reserved. All other trademarks are the property of their respective owners.

