

# ConnectorMax Analysis Software

DELIVERING FAST PASS/FAIL  
ASSESSMENT OF CONNECTOR ENDFACES

■ ConnectorMax delivers clear-cut pass/fail verdicts, eliminating guesswork in the field and helping you save time and money.



## KEY FEATURES

Automatic pass/fail analysis in the portable FTB-1, FTB-200 and FTB-500 platforms

Lightning-fast: results in a few seconds through simple one-touch operation

Full test reports for future referencing

Compatible with EXFO's FIP-400 Series scopes

## APPLICATIONS

Connector inspection and certification

Network troubleshooting

IEC/IPC-compliant network acceptance testing

## COMPLEMENTARY PRODUCTS



FTB ecosystem platforms:  
FTB-1, FTB-200 and FTB-500



Fiber Inspector Scope  
FIP-400



Software  
FastReporter2

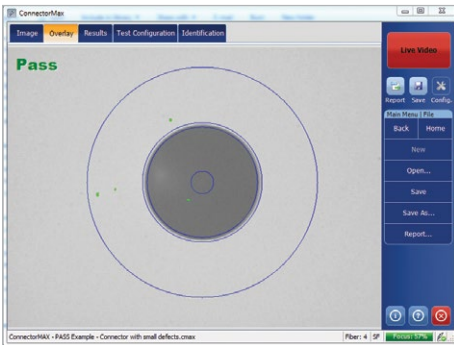


## OUT WITH GUESSWORK, IN WITH TIME AND MONEY SAVINGS

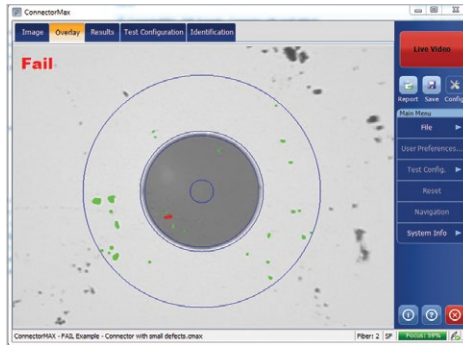
Delivering fast pass/fail assessment of connector endfaces, EXFO's ConnectorMax Analysis Software is designed to save both time and money in the field. The industry's first platform-based, automated inspection application, ConnectorMax eliminates guesswork, instead providing clear-cut connector endface analysis.

ConnectorMax enables field technicians to analyze defects and scratches and measure their impact on connector performance. Results are then compared against pre-programmed IEC/IPC standards or user-defined criteria, leading to accurate pass/fail verdicts established right on-site.

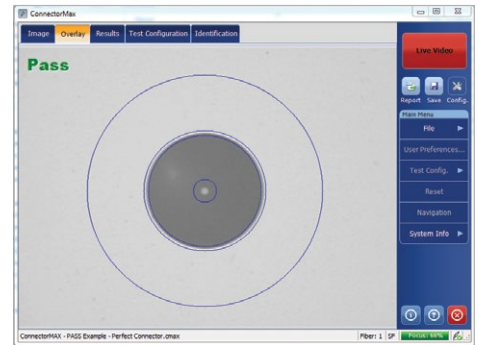
ConnectorMax therefore helps avoid two time- and money-consuming situations: undetected connector defects that force technicians to later return to the site, and unnecessary replacement of connectors whose slight defects are not enough to get a "fail" verdict.



*Imperfect connector still meeting acceptance criteria.*



*Defective connector failing acceptance criteria.*



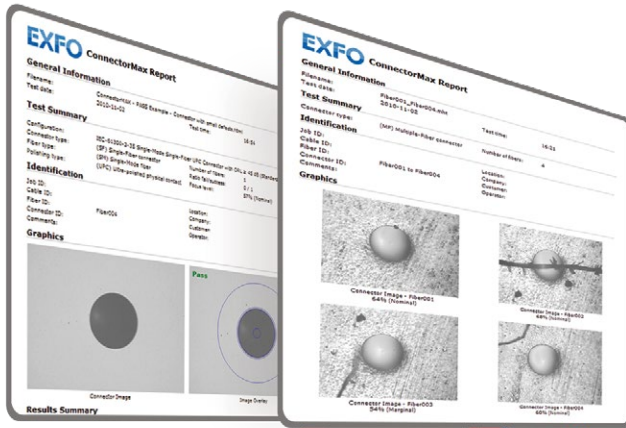
*Connector free of any defect.*

KEY FEATURES	BENEFITS	ADDITIONAL FEATURES
Housed in the FTB-1, FTB-200 and FTB-500 platforms	All-in-one test solution: processing and reporting done on-site—no need for a PC	Autosave and Reset feature for multiple-pass cleaning procedures
Quick and easy image capture	Full test reports combining statistical and visual data, for future referencing	Autonaming
Clear pass/fail results through simple one-button operation	Simplify and speed up connector assessment in the field	Automatic report documentation in multiple formats
Test procedures that comply with IEC 61300-3-35 and IPC 8497-1 standards	Consistent, repeatable results	Multifiber reporting
Focus meter	Prevents out-of-focus analysis, ensuring consistent results all the time	Full file documentation (job, cable, fiber, connector and location IDs, customer, operator, company, etc.)

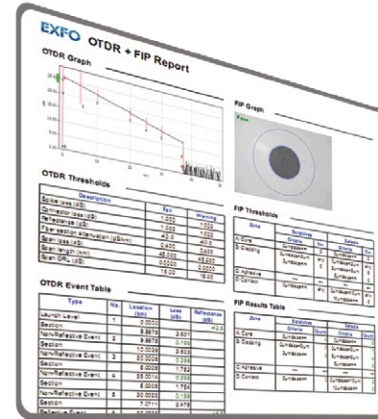
## Document your work

ConnectorMax Analysis Software comes with extensive reporting capabilities enabling you to automatically generate full reports in various formats, including the single-file .mhtml format—right on-site.

Advanced reporting and batch processing capabilities are available through our FastReporter data post-processing software, including combined OTDR and FIP reports. For more information, please consult the FastReporter brochure.



Single fiber connector report. Multifiber connector report.



OTDR and FIP report (option available with FastReporter).

## CONNECTORMAX SOFTWARE GENERAL SPECIFICATIONS

### Platform compatibility

FTB-1, FTB-200<sup>a</sup>, FTB-500

### PC compatibility and system requirements

To be able to install and run ConnectorMax on your computer, you must meet the minimum requirements below:

SYSTEM ELEMENT	MINIMUM REQUIREMENTS (WINDOWS XP)	MINIMUM REQUIREMENTS (WINDOWS VISTA 32 AND 64 BITS)	MINIMUM REQUIREMENTS WINDOWS 7 (32 AND 64 BITS)
Processor	Pentium (800 MHz or higher recommended)	Pentium (1.6 GHz or higher recommended)	Pentium (1.6 GHz or higher recommended)
RAM	256 MB (512 MB recommended)	256 MB (1 GB recommended)	512 MB (2 GB recommended)
Disk space	400 MB	400 MB	400 MB
Monitor	EXFO recommends a minimum screen resolution of 800 X 600 and a color quality value of at least 16 bits.		
Other requirements	.NET Framework 2.0 SP1 DirectX 9.0 (Windows XP, Vista and Windows 7) USB 2.0 (with Windows XP, Vista and Windows 7)		

### SOFTWARE FEATURES

Fiber inspection	Single fiber Multiple fiber (software option)
Analysis	Single fiber (software option)
Reporting format	HTML MHTML

a. Compatible with FTB-200 v2.

## Fiber inspection scope compatibility

TIP DESCRIPTION	TIP CODE	INSPECTION COMPATIBILITY	ANALYSIS COMPATIBILITY (OPTIONAL)
Universal patchcord tip for 1.25 mm ferrule	FIPT-400-U12M	•	•
LC tip for PC bulkhead adapter	FIPT-400-LC	•	•
FC and SC APC tip for bulkhead adapter	FIPT-400-FC-SC-APC	•	•
Universal patchcord tip for 2.5 mm APC ferrule	FIPT-400-U25MA	•	•
Universal patchcord tip for 1.25 mm APC ferrule	FIPT-400-U12MA	•	•
ST tip for UPC bulkhead adapter	FIPT-400-ST	•	•
FC and SC tip for bulkhead adapter	FIPT-400-FC-SC	•	•
Universal patchcord tip for 2.5 mm PC ferrule	FIPT-400-U25M	•	•
SC tip for bulkhead adapter (extended)	FIPT-400-SC-L	•	•
MU tip for UPC bulkhead adapter	FIPT-400-MU	•	•
E-2000 tip for PC bulkhead adapter	FIPT-400-E2000	•	•
FC and SC angled tip for bulkhead (60 degree)	FIPT-400-FC-SC-A6	•	•
MU-L tip for UPC bulkhead adapter	FIPT-400-MU-L	•	•
D4 tip for bulkhead adapter	FIPT-400-D4	•	•
Universal patchcord tip for male ferrule	FIPT-400-U20M2	•	•
Lemo tip for bulkhead adapter	FIPT-400-Lemo	•	•
E-2000 tip for APC bulkhead adapter	FIPT-400-E2000-APC	•	
OptiTap™ tip for APC bulkhead adapter	FIPT-400-OTAP-APC	•	
MT/APC type OptiTip™ for male and female connectors	FIPT-400-OTIP-MT-APC	•	
MT/APC type OptiTip™ for male connectors	FIPT-400-OTIP-MT-APC/M	•	
LC tip for APC bulkhead adapter	FIPT-400-LC-APC	•	
LC angled tip for bulkhead adapter (60 degree)	FIPT-400-LC-A6	•	
LX.5 tip for UPC bulkhead adapter	FIPT-400-LX5	•	
LX.5 tip for APC bulkhead adapter	FIPT-400-LX5-APC	•	
MTP/APC tip for bulkhead adapter (extended, reversible)	FIPT-400-MTPA2	•	
MTP2 tip for bulkhead adapter (extended, reversible)	FIPT-400-MTP2	•	
MTP2 replaceable nozzle for MTP2 (extended, reversible)	FIPT-400-MTP2-TIP	•	
MTPA replaceable nozzle for MTP2 (extended, reversible)	FIPT-400-MTPA-TIP	•	
Bulkhead adapter tip	FIPT-400-ADAPTER	•	
SMA tip for bulkhead adapter	FIPT-400-SMA	•	
SMA tip for male connector	FIPT-400-SMAM	•	
Universal patchcord tip for 1.6 mm PC ferrule	FIPT-400-U16M	•	
MTRJ tip for bulkhead adapter	FIPT-400-MTRJ	•	
SC tip for APC bulkhead adapter (extended)	FIPT-400-SC-APC-L	•	

Refer to EXFO's documentation or contact your vendor for additional information on the most recent FIP-400 tips that may not be listed above.

## HARDWARE GENERAL SPECIFICATIONS

FIP-400 FIBER INSPECTION SCOPE		
Size (H x W x D)	without tip cap	38 mm x 32 mm x 170 mm (1 1/2 in x 1 1/4 in x 6 11/16 in)
	with tip cap	38 mm x 32 mm x 200 mm (1 1/2 in x 1 1/4 in x 7 3/4 in)
Weight		0.2 kg (0.44 lb)
Resolution		<2 µm, 0.7 µm (typical)
Field of view		625 µm x 464 µm (low magnification) a 412 µm x 306 µm (high magnification)
Light source		Blue LED
Lighting technique		Coaxial
Capture button		Present on all models
Connector		EXFO scope port type (8 pin mini-DIN)
Focus control		Adjustable on the scope
Optical magnification		Adjustable, low and high (dual model only)
Temperature	operating	-10 oC to 50 oC
	storage	-40 oC to 70 oC
Relative humidity		0 % to 95 % non-condensing

FIBER SCOPE VIEWER	
Size (H x W x D)	50 mm x 99 mm x 190 mm (1 15/16 in x 3 7/8 in x 7 1/2 in)
Weight <sup>b</sup>	0.3 kg (0.66 lb)
LCD screen	3.5 in TFT active matrix (320 x 240 pixels)
Power	Rechargeable Li-ion battery or AC adapter/charger
Battery life	3 hours (continuous use)
Charging time	4 hours
Connector	EXFO scope port type (8 pin mini-DIN)

USB CONVERTER	USB 1.1 MODEL	USB 2.0 MODEL
Size (H x W x D)	20 mm x 36 mm x 90 mm (13/16 in x 1 7/16 in x 3 9/16 in)	19 mm x 36 mm x 95 mm (3/4 in x 1 7/16 in x 3 3/4 in)
Connectors	EXFO scope port type (8 pin mini-DIN)/USB	EXFO scope port type (8 pin mini-DIN)/USB
Capture button	No	Yes
ConnectorMax compatibility	No	Yes

a. Dual model only.

b. Without battery.

## ORDERING INFORMATION

## Platform

**FPSA**

Fiber inspection scope analysis software for portable platform

**FPSAMF**

ConnectorMax kit:

- Single-fiber analysis and reporting
- Multiple-fiber connectors wizard and reporting

## PC

**FPSA-PC**

Fiber inspection scope analysis software for PC or laptop<sup>a</sup>

**FPSAMF-PC**

ConnectorMax kit:

- Single-fiber analysis and reporting
- Multiple-fiber connectors wizard and reporting

a. The FIP-400-USB2, USB 2.0 converter module is required and sold separately.

**EXFO headquarters** T +1 418 683-0211 **Toll-free** +1 800 663-3936 (USA and Canada)

EXFO serves over 2000 customers in more than 100 countries. To find your local office contact details, please go to [www.EXFO.com/contact](http://www.EXFO.com/contact).

For the most recent patent marking information, please visit [www.EXFO.com/patent](http://www.EXFO.com/patent). EXFO is certified ISO 9001 and attests to the quality of these products. EXFO has made every effort to ensure that the information contained in this specification sheet is accurate. However, we accept no responsibility for any errors or omissions, and we reserve the right to modify design, characteristics and products at any time without obligation. Units of measurement in this document conform to SI standards and practices. In addition, all of EXFO's manufactured products are compliant with the European Union's WEEE directive. For more information, please visit [www.EXFO.com/recycle](http://www.EXFO.com/recycle). **Contact EXFO for prices and availability or to obtain the phone number of your local EXFO distributor.**

For the most recent version of this spec sheet, please go to [www.EXFO.com/specs](http://www.EXFO.com/specs).

In case of discrepancy, the web version takes precedence over any printed literature.