

# CT440/CT440-PDL

## OPTICAL COMPONENT TESTER

- Compact tester for fast and accurate characterization of passive optical components (MUX/DEMUX, filters, splitters, etc.) and modules (ROADM, WSS). Covers the spectral range from 1240 to 1680 nm for measurements over the full telecom band. With the PDL option, simultaneously measure insertion loss and polarization dependent loss.



### KEY FEATURES

Fast transfer function measurement

Wavelength range: 1240 - 1680 nm (SMF model)

PM and PDL options

Wavelength resolution: 1 to 250 pm

Wavelength accuracy:  $\pm 5$  pm

Dynamic range: 65 dB in a single sweep

Combines up to four tunable lasers (SMF type)

Four internal detectors, expandable with synchronization

19-in rack compatible with 1U format

## FAST INSERTION LOSS MEASUREMENT

The CT440 features a unique combination of high-speed electronics and optical interferometry. The four integrated detectors allow for the simultaneous measurement of four channels with a dynamic range of 65 dB in a single laser sweep. Moreover,  $\pm 5$  pm wavelength accuracy is achieved at any sweep velocity from 10 nm/s to 100 nm/s, leaving no compromise between measurement speed and accuracy.

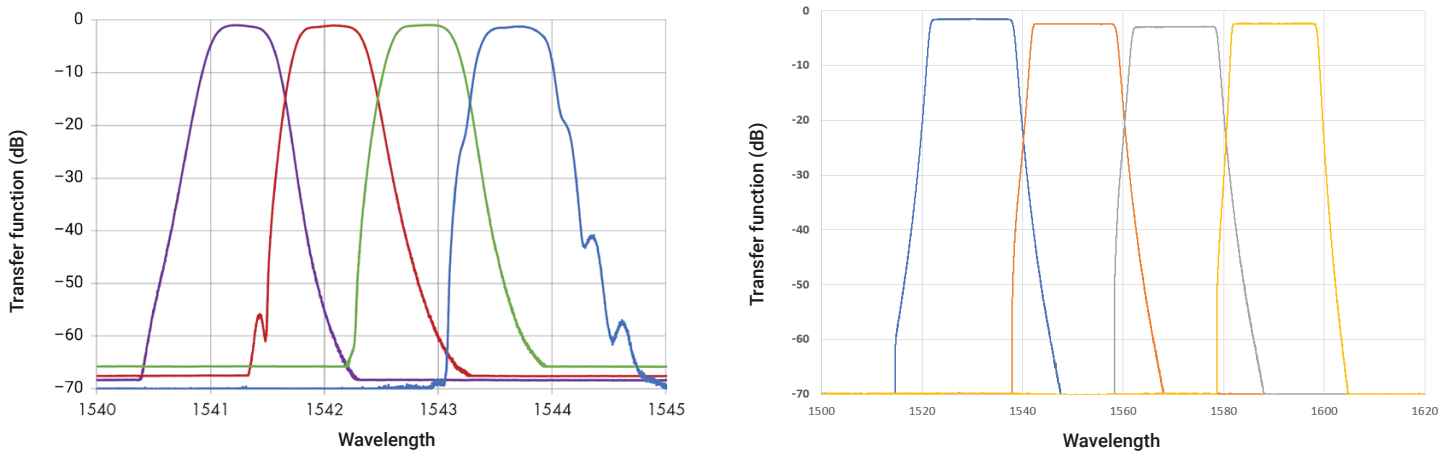


Figure 1. DWDM (left) and CWDM (right) filter measurement in a single sweep

## ACCURATE INSERTION LOSS MEASUREMENT

The CT440 integrates a monitoring photodetector to compensate for any power fluctuation coming from the laser source during the sweep. Sampling resolution can be chosen between 1 and 250 pm independently of the laser sweep speed. In addition to the  $\pm 5$  pm wavelength accuracy, the built-in wavemeter relaxes the requirements for the tunable laser source (TLS) to bring down the system cost without affecting measurement performance. The CT440 provides all the features you need for accurate measurements in a single box when interfaced with a TLS and a PC.

## FULL-BAND READY

The CT440 (SMF model) can operate between 1240 and 1680 nm and is fully compatible with EXFO's T200S/T500S and the legacy T100S-HP continuously tunable lasers. When several TLSs are used, the CT440 can automatically switch between the lasers to allow for seamless full-band measurements. The single connection to the DUT means no external switch is required.

## PM OPTION

The CT440 can be ordered with polarization-maintaining (PM) fiber throughout the instrument as an option. This enables insertion loss characterization of polarization-sensitive components (e.g., MZ modulator), where a polarization maintaining fiber is needed between the TLS input and output ports. Two models cover either the O-band (1260 nm to 1360 nm) with a PM13 fiber type or the SCL-band (1440 nm to 1640 nm) with a PM15 fiber type.

## PDL OPTION

The CT440-PDL integrates a polarization state generator that allows for spectral characterization of both insertion loss and polarization dependent loss (based on the Mueller matrix method) using successive polarization-controlled sweeps. Two models cover either the O-band (1260 nm to 1360 nm) with a PM13 fiber type or the SCL-band (1440 nm to 1640 nm) with a PM15 fiber type.

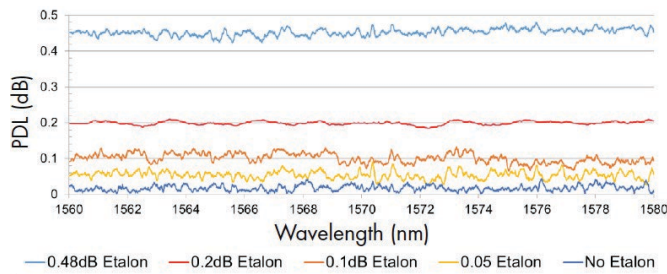


Figure 2. Four PDL etalons measured at 10 pm resolution



Figure 3. CT440-PDL model

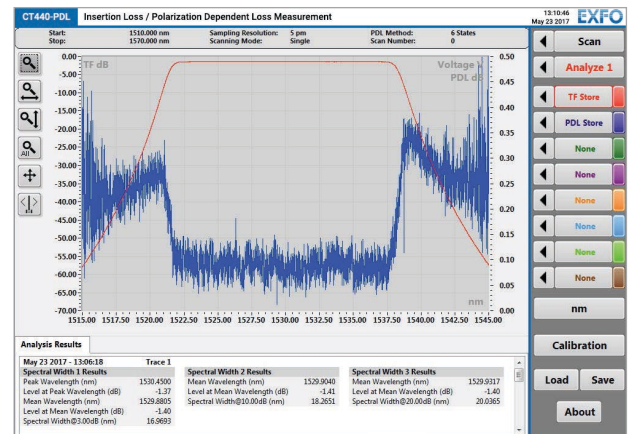


Figure 4. IL and PDL measurement on a CWDM filter

## ADDITIONAL FEATURES

### Heterodyne detection of laser line (SMF models with $\geq 2$ TLS inputs)

A signal under test (SUT) can be connected to the TLS input n°2. As the laser sweeps across the wavelength range, interference patterns will be generated and detected by the CT440 when it crosses the SUT wavelengths. As such, the CT440 can be used as a multiwavelength meter.

### System recalibration using a known reference laser or a fiber-coupled gas cell

For experiments where absolute wavelength referencing is paramount, the CT440 can be used with the wavelength reference material accessories. The wavelength reference material contains either hydrogen fluoride or hydrogen cyanide reference cells exhibiting absorption lines in the O-band and C-band respectively for excellent absolute wavelength accuracy.

### Control software with built-in analysis functions

Intuitive and comprehensive GUI for easy laser management, reference and scan configurations and filter analysis.

### Full remote control

Thanks to the DLL and the example software code provided with the CT440, component testing can be readily integrated into complex remote control programs.

### Optimized form-factor

The CT440 comes in a new rackmountable format (1U in height), ideal for laboratories with limited space.



Figure 5. Wavelength reference material gas cell

## SPECIFICATIONS

Model		F Full-band IL	O O-band PM IL	SCL SCL-bands PM IL	PDL-O O-band IL & PDL	PDL-SCL SCL-bands IL & PDL	
Wavelength	Operating wavelength range (nm)	1240 to 1680	1260 to 1360	1440 to 1640	1260 to 1360	1440 to 1640	
	Wavelength accuracy	Absolute (pm) <sup>a,b</sup>		±5			
Optical ports (front panel)	TLS inputs and outputs	Relative (pm) <sup>a</sup>	±1		±5		
		Number of input ports	1 to 4 (SMF)	1 (PM13)	1 (PM15)	1 (PM13)	1 (PM15)
		Number of output ports	1 (SMF)	1 (PM13)	1 (PM15)	1 (SMF)	
	Detector array	Connector type	FC/APC narrow key				
		Polarization extinction ration (PER)	n/a	≥20 dB		≥18 dB (recommended)	
		Number of detector ports	1, 2 or 4				
Electrical ports (rear panel)	Connector type	FC/PC wide key					
	Trigger out (5 V TTL)	Swept measurement external synchronization (pulse train generated at native sampling resolution)					
	Trigger in (5 V TTL)	Triggered measurement without laser sweep control (measurement is taken when TTL level = high)					
Electrical ports (rear panel)	Analog voltage in (0-5 V high impedance)	Voltage level sampling from an external device (sampling resolution of 1.3 mV)					
Optical power	Power range	On TLS input (dBm)	0 to 10				
		On detector ports (dBm)	-60 to 7				
	Transfer function	Accuracy (dB) <sup>c,d</sup>	±0.2				
		Sampling resolution (dB)	0.02				
		Dynamic range <sup>d,e</sup>	65 dB typical for 1 or 2 TLS inputs 60 dB typical for 3 or 4 TLS inputs	65 dB typical			
	Polarization-dependent loss	Accuracy (dB) <sup>f</sup>	n/a			±0.05 + 4% PDL	
		Measurement range <sup>g</sup>	n/a			0 to 20	
Repeatability		n/a			±0.05		
Sampling characteristics	Resolution (pm)	1 to 250			5 to 250		
	Native sampling resolution	N x 100 ±10 MHz (N=1 to 250)					
	Compatible sweep speed of TLS (nm/s)	From 10 to 100					
Data handling	Interface with PC / Data rate	USB-B 2.0 / 4 MBaud					
	Maximum number of transfer function data points per TLS per detector as a function of number of activated detectors by software <sup>h</sup>	260,000 for 1 detector 219,500 for 2 detectors 164,400 for 3 detectors 131,100 for 4 detectors 110,500 for 5 detectors					
Environment	Temperature	Operating	15 °C to 30 °C (59 °F to 86 °F)				
		Storage	-10 °C to 60 °C (14 °F to 140 °F)				
	Relative humidity	< 80 % non-condensing					
	Power supply	AC 100 V to 240 V (50 Hz to 60 Hz)					
	Dimensions (W x H x D)	440 mm x 50 mm x 375 mm (17.3 in x 2 in x 14.8 in), including rackmounting brackets					
Weight	Between 3.5 kg and 3.9 kg (7.7 lb to 8.6 lb), depending on model						

## MEASUREMENT SETUP

Tunable laser source (TLS)	Remote control	GPIB or Ethernet (T200S/T500S)
	Output power	See CT440 specifications above
	Sweep speed	See CT440 specifications above
	Mode hops	No mode hop is best but the instrument is able to detect and still operates with a few mode hops
PC	Operating system	Windows 10
	Interfaces	USB-A 2.0 port to CT440 and GPIB interface card to TLS

a. For a TLS sweep > 5 nm at sampling resolution of 5 pm for PDL-O and PDL-SCL and 1 pm otherwise, excluding the acceleration and deceleration part of the TLS sweep.

b. After wavelength referencing.

c. For incident power on detectors > -30 dBm. Accuracy: ± 0.5 dB for power between -30 dBm and -60 dBm.

d. 1260 nm to 1640 nm.

e. If laser output power = 10 mW (dynamic range is proportional to laser output power).

f. For incident power on detectors > -30 dBm and determined from a 6-states measurement at 5 pm resolution.

g. Stable testing conditions, 6-states recommended for high PDL.

h. Selected frequency range of the laser divided by the native sampling resolution.



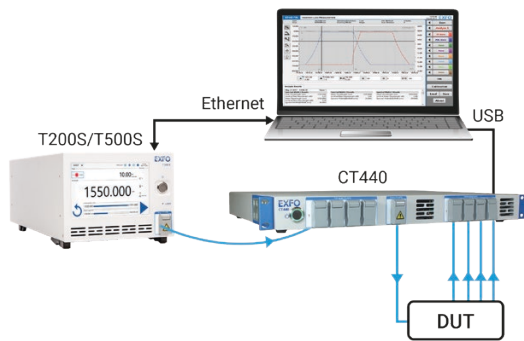


Figure 6. Typical configuration for full band characterization

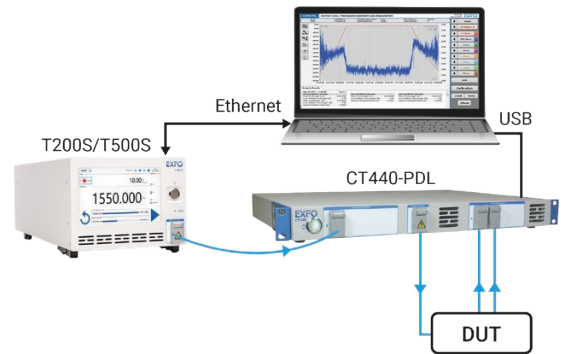


Figure 7. PDL measurement using the CT440-PDL

## ORDERING INFORMATION

CT440-XX-XX-XX-XX-XX

**PDL option**

00 = Without PDL option  
PDL = With PDL option

**Number of laser inputs**

1 = 1 laser input  
2 = 2 laser inputs  
3 = 3 laser inputs  
4 = 4 laser inputs

Example: CT440-00-2-4-F-58

**Connector**

58 = FC/APC narrow key

**Wavelength range and TLS input fiber type**

F = 1240 nm to 1680 nm, SMF28 singlemode fiber<sup>a</sup>  
SCL = 1440 nm to 1640 nm, PM15 polarization maintaining fiber<sup>b</sup>  
O = 1260 nm to 1360 nm, PM13 polarization maintaining fiber<sup>b</sup>

**Number of detectors**

1 = 1 detector  
2 = 2 detectors  
4 = 4 detectors

WLRM-NS270X

**Spectral reference range**

1 = C-band  
2 = O-band

Example: WLRM-NS2701

a. Only available only for models without PDL.

b. Only available with 1 laser input.

**EXFO headquarters** T +1 418 683-0211 **Toll-free** +1 800 663-3936 (USA and Canada)

EXFO serves over 2000 customers in more than 100 countries. To find your local office contact details, please go to [www.EXFO.com/contact](http://www.EXFO.com/contact).

For the most recent patent marking information, please visit [www.EXFO.com/patent](http://www.EXFO.com/patent). EXFO is certified ISO 9001 and attests to the quality of these products. EXFO has made every effort to ensure that the information contained in this specification sheet is accurate. However, we accept no responsibility for any errors or omissions, and we reserve the right to modify design, characteristics and products at any time without obligation. Units of measurement in this document conform to SI standards and practices. In addition, all of EXFO's manufactured products are compliant with the European Union's WEEE directive. For more information, please visit [www.EXFO.com/recycle](http://www.EXFO.com/recycle). **Contact EXFO for prices and availability or to obtain the phone number of your local EXFO distributor.**

For the most recent version of this spec sheet, please go to [www.EXFO.com/specs](http://www.EXFO.com/specs).

In case of discrepancy, the web version takes precedence over any printed literature.