

# FIP-200 Connector Checker™



COMPATIBLE WITH  
**EXchange**

## PURPOSE-BUILT FOR BROADBAND SERVICE ACTIVATION

- Compact, intuitive, with adapted pass/fail thresholds and cloud-hosted job management to ensure compliance and trouble-free activation in one click.

### KEY FEATURES

- Streamlined form factor and easy to use
- Single-button operation for power-on and capture
- Five-bar rating (LED lights) to quickly assess cleanliness of the connector
- Visually clear pass/fail thresholds adapted to broadband context
- Long-reach head to easily access dense panels and cabinets
- Variety of tips available for most common FTTH fiber terminals
- Quick-connect design: quarter-turn click for switching between tips
- Short-reach head for cost-effective SC inspection
- Autonomous operation, can be used on its own without a cell phone
- Test all day without any interruption:
  - Long-lasting battery
  - Stores test results locally
- Cloud-hosted job management and reporting via EXFO Exchange™ to ensure technician compliance
- Rugged and designed for the field

### APPLICATIONS

- Fiber-to-the-home (FTTH)
- Service activation

### RELATED PRODUCTS



Cleaning kits

## TROUBLE-FREE BROADBAND ACTIVATION IN ONE CLICK

The FIP-200 builds on EXFO's trusted experience in fiber inspection with leading features:

- Enhanced illumination technique based on two LEDs
- Blue LEDs (460-nm light) for better contrast
- Solid-state optical system. No moving parts for increased reliability.
- Dual-core CPU, for faster acquisition, analysis and boot time

## PACKED WITH INNOVATIVE FEATURES



### Super easy to use

With one-button operation for power-on and image capture, the FIP-200 works anywhere—even in the dark or upside down. Just affix it to a connector, press the button, and get the result. No settings or configuration needed.



### Purpose-built

Pass/fail thresholds adapted to broadband activation, featuring a 5-bar rating to assess connector cleanliness and avoid unnecessary connector handling.



### Compliance through connectivity

Ensure compliance across teams and simplify reporting through the cloud-hosted job and test data management capabilities of EXFO Exchange.



### Autonomous mode

The FIP-200 can also operate independently, with no phone required for basic functions.



### Easy to carry

Sleek shape for technicians on the move, and comes with EXFO's proven field ruggedness.

## Did you know?

Dirty or damaged connectors remain the no. 1 cause of network outages worldwide.

Inspection is vital to ensure service reliability. Do it in one click with the FIP-200.



### Longer reach

With the long-reach optical head available, you can access dense panels without disrupting adjacent fibers.



### Over-the-air software updates

Easy software updates via WiFi.



### Quick-connect tips

With the long-reach optical head, swap tips in a quarter-turn click to quickly move from one test point to the next.

## KEEP TRACK OF YOUR TEST POINTS

To keep track of the different test points required on the job, inspection results can be uploaded to EXFO Exchange; complete with timestamp and geolocation.

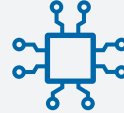


## TEST ALL DAY WITH LOTS OF BATTERY LIFE AND MEMORY



### Long battery life

The FIP-200 is powered by a lithium-polymer rechargeable battery which can provide multiple days of use without needing a recharge.



### High storage capacity

With an internal memory that can save up to 100 test results, there is no need to stop and offload results. It can be done at the end when wrapping up the installation.

These features, added to an ergonomic hand grip, all come together in helping technicians close jobs without any interruption.

## RETURN ON INVESTMENT

The FIP-200 Connector Checker is designed to make fiber inspection a seamless process for fiber installation technicians, improving network quality and preventing repeat truck rolls so that it pays for itself.



### No training needed

Single-button, fully automated inspection combined to a visual rating makes it easy for any technician to make the most of the FIP-200, without training.



### Higher initial success rate

It is proven that checking connectors during FTTH service activation yields a higher success rate the first time; cutting down on the need for rework and repeat truck rolls.



### Results in seconds

With an end-to-end inspection time of less than 10 seconds, technicians are not slowed down when checking connectors.



### Warranty

Comes with a 1-year warranty and EXFO's proven durability.



### PRODUCT OVERVIEW

- 1 Interchangeable tips
- 2 Long-reach optical head
- 3 5-bar rating LEDs
- 4 Capture button
- 5 Battery status LED
- 6 Textured handle for good grip
- 7 USB-C recharging port
- 8 Hook for wrist strap

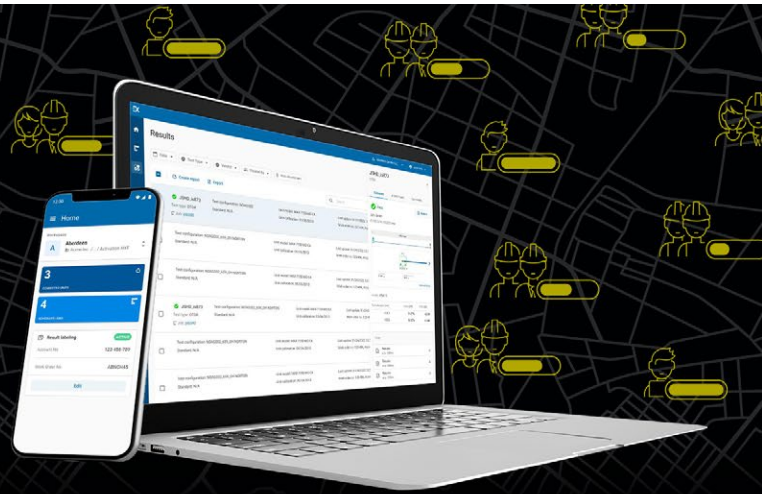




**SHARE TEST RESULTS.  
BOOST COMPLIANCE.  
UNLOCK INSIGHTS.**

**Cloud-hosted solution for sharing test results and ensuring compliance.**

Paired with EXFO's leading test instruments, EXFO Exchange drives an entire ecosystem, while integrating seamlessly with existing operation processes.



## KEY BENEFITS



**Automate test results management**



**Boost compliance and efficiency**



**Improve collaboration and visibility**



**Access comprehensive reporting**



**Unlock insights to see what matters**

## SIMPLE SETUP IN THREE STEPS

1

### Create your free EXFO Exchange account

Begin your journey by creating an EXFO Exchange account. Setting up your account is quick and easy.



2

### Install the mobile app

Download the EXFO Exchange app to allow test data from compatible EXFO devices to be uploaded securely to the cloud (free of charge).



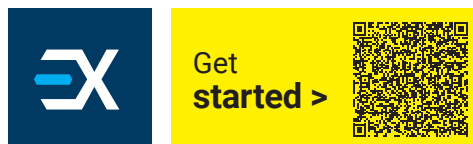
For MaxTester and FTB users, install the native app.



3

### Save time and boost efficiency

Once your account created—and the mobile app installed and paired with compatible EXFO devices—all test results will be sent to the cloud. On the web app, you will see field test results from all invited testers.



## SPECIFICATIONS

SPECIFICATIONS	
End-to-end inspection and analysis time	7 seconds
Field of view	Single-fiber: 0.75 mm × 0.75 mm
Pass/fail analysis	5-bar rating for FTTH networks
Camera sensor	5 megapixels
Light source	Blue LED at 460 ±10 nm
CPU	1.4 GHz dual core
Connectivity	Bluetooth® and WiFi
Battery type	Lithium-ion polymer (Li-Po) rechargeable battery
Autonomy	210 captures 3h30 at 1 capture per minute
Charging time	46 minutes to 50% 120 minutes to 100%
Connector	USB-C
Local storage capability	100 single-fiber measurements
EXFO Exchange synchronization	Yes

GENERAL SPECIFICATIONS	
Size (H × W × D)	247 mm × 40 mm × 38 mm (9 3/4 in × 1 5/8 in × 1 1/2 in) <sup>a</sup>
Reach (long-reach head)	60 mm (2 3/8 in)
Weight	137 g (0.3 lb)
Temperature	Operating: -10 °C to 40 °C (14 °F to 104 °F) Storage: -20 °C to 60 °C (-4 °F to 140 °F)
Humidity range	0 % to 95 % non-condensing
Supported languages (user manual) <sup>b</sup>	English, French

ACCESSORIES (INCLUDED)	
GP-3257	USB-A to USB-C cable 1 m (USB 2.0 only)
GP-3258	Protective cap and cord assembly

ACCESSORIES (SOLD SEPARATELY OR INCLUDED WITH KITS)	
GP-2227	USB AC adapter (includes interchangeable plugs for Australia, Europe, North America and UK)
GP-3253	Soft pouch for FIP-200
GP-3254	Combo pouch FIP-200, and OX1 or AXS-120
GP-3255	Belt holster for FIP-200
GP-3256	Replacement battery for FIP-200

a. FIP-200 body with tip.

b. Translations available upon request.



## ORDERING INFORMATION

## FIP-200-A-KIT-XX

## FIP-200 kits ■

FIP-200-A-KIT-1 = SC/APC inspection kit

Includes FIP-200-A with OHC-L long-reach optical head, CTIP-SC inspection tip, soft carrying case (GP-3253), power supply (GP-2227).

FIP-200-A-KIT-2 = SC/APC + LC/APC inspection kit

Includes FIP-200-A with OHC-L long-reach optical head, CTIP-SC inspection tip, CTIP-LC inspection tip, soft carrying case (GP-3253), power supply (GP-2227).

## FIP-200-A-XX-XX

## Configuration ■

FIP-200-A = FIP-200 Connector Checker, APC

## Optical head\* ■

OHC-SC = Short-reach optical head for SC connector

OHC-L = Long-reach optical head with quick-connect for CTIP<sup>b</sup>

Single-fiber tips<sup>c</sup> ■

CTIP-SC = Inspection tip for SC/APC connector

CTIP-LC = Inspection tip for LC/APC connector

CTIP-OTAP = Inspection tip for Corning OptiTap<sup>®</sup> connector

CTIP-PLOK = Inspection tip for Corning Pushlok<sup>™</sup> connector

CTIP-DLX = Inspection tip for Commscope DLX connector

CTIP-FASTC = Inspection tip for Huawei FastConnect connector

Example: FIP-200-A-OHC-L-CTIP-SC-CTIP-OTAP

- More than one optical head or CTIP can be ordered together with the FIP-200.
- Requires one or multiple CTIPs.
- Long-reach optical head required.

**EXFO headquarters** T +1 418 683-0211 **Toll-free** +1 800 663-3936 (USA and Canada)

EXFO serves over 2000 customers in more than 100 countries. To find your local office contact details, please go to [www.EXFO.com/contact](http://www.EXFO.com/contact).

For the most recent patent marking information, please visit [www.EXFO.com/patent](http://www.EXFO.com/patent). EXFO is certified ISO 9001 and attests to the quality of these products. EXFO has made every effort to ensure that the information contained in this specification sheet is accurate. However, we accept no responsibility for any errors or omissions, and we reserve the right to modify design, characteristics and products at any time without obligation. Units of measurement in this document conform to SI standards and practices. In addition, all of EXFO's manufactured products are compliant with the European Union's WEEE directive. For more information, please visit [www.EXFO.com/recycle](http://www.EXFO.com/recycle). **Contact EXFO for prices and availability or to obtain the phone number of your local EXFO distributor.**

For the most recent version of this spec sheet, please go to [www.EXFO.com/specs](http://www.EXFO.com/specs).

In case of discrepancy, the web version takes precedence over any printed literature.

The Bluetooth<sup>®</sup> word mark and logos are registered trademarks owned by the Bluetooth SIG, Inc.