

# Packet Blazer SAN Test Module

FTB-8515



Fully integrated functionality for installation and commissioning of WDM networks with Fibre Channel interfaces to the FTB-400

Dual test ports for commissioning multiple customer circuits simultaneously

Long-term BER measurements (channel soaking) with simultaneous OSA monitoring

Round-trip latency measurement for ensuring critical-delay applications are within specifications

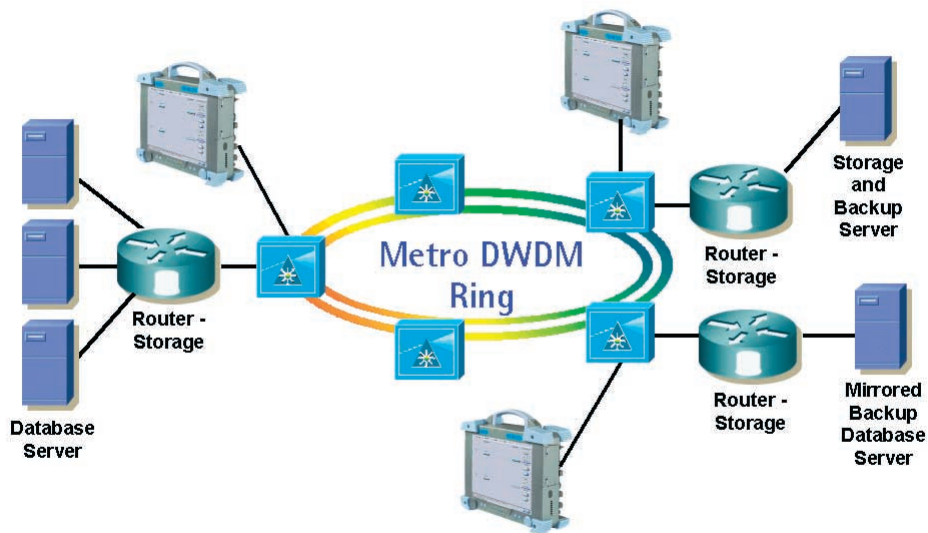


Fiber-optic T&M,  
monitoring, manufacturing  
and assembly solutions

**EXFO**

# EXFO's Packet Blazer SAN—Testing Fibre Channel in WDM Metro Networks

Housed in the FTB-400 platform, the Packet Blazer SAN Test Module brings Fibre Channel testing to WDM metro networks. The Packet Blazer SAN tests Fibre Channel connectivity over transparent WDM networks. By performing a round-trip latency measurement, the Packet Blazer SAN provides valuable timing information on delay-sensitive corporate applications.



## Key Features

- Smart User Interface (SUI) for configurable screens, as well as real-time and historical performance reporting
- Transparent Fibre Channel-over-WDM testing at wire-speed, full-duplex 100 MB/s (1.0625 Gb/s)
- BER testing of 100 MB/s (1.0625 Gb/s) transparent Fibre Channel circuits
- Round-trip latency measurement for evaluating the capability of a link to transport delay-sensitive applications

## Efficiency and Reliability

With the FTB-8515 Packet Blazer SAN, you can characterize Fibre Channel services, as well as conduct end-to-end performance testing with a single test module. The FTB-8515 ensures long-term integrity and error-free data delivery across transparent WDM links.

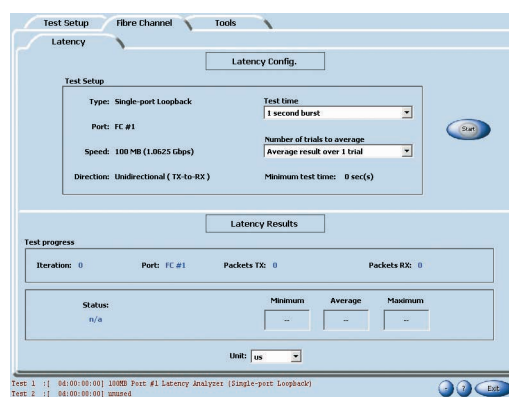
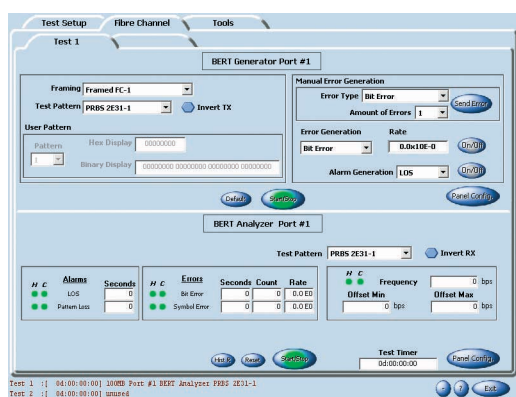
## User-Friendly Interface

The easy-to-use Smart User Interface (SUI) lets you tailor screen configurations, customize test routines and format reports on real-time and historical performance.

## First-Class Comprehensiveness

The FTB-8515 performs transparent Fibre Channel testing at wire-speed, full-duplex 100 MB/s over WDM networks. This versatile module delivers simultaneous traffic generation and capture at 100 % wire speed for 100-SM-LL-I and 100-M5-SL-I WDM networks. The FTB-8515 also features bit-error-rate testing (BERT) for Fibre Channel circuits.

## Packet Blazer Smart User Interface



## Specifications

|                               | FTB-8515-1   | FTB-8515-2   |
|-------------------------------|--|--|
| Port                          | One Fibre Channel port                               | Two Fibre Channel ports                              |
| Rate                          | 100 MB/s (1.0625 Gb/s)                               | 100 MB/s (1.0625 Gb/s)                               |
| Connector Type                | LC   | LC   |
| Optical Transceivers          | 850 nm short-wave optics<br>1300 nm long-wave optics | 850 nm short-wave optics<br>1300 nm long-wave optics |
| Port Capacity                 | Full-line rate traffic generation and analysis       | Full-line rate traffic generation and analysis       |
| <b>General Specifications</b> |  |  |
| Weight (without transceiver)  | 0.5 kg   | (1.1 lb)   |
| Size (H x W x D)              | 2.5 cm x 9.6 cm x 26 cm                              | (1 in x 3 3/4 in x 10 1/4 in)                        |
| Temperature                   |  |  |
| Operating                     | 0 °C to 40 °C  | (32 °F to 104 °F)                                    |
| Storage                       | -40 °C to 60 °C                                      | (-40 °F to 140 °F)                                   |

# Ordering Information

## Ordering Module

**FTB-85XX**

Model \_\_\_\_\_  
 FTB-8515-1 = Packet Blazer SAN, 1 port  
 FTB-8515-2 = Packet Blazer SAN, 2 ports  
 For Fibre Channel optical interfaces, order an FTB-859X transceiver separately.

## Ordering Test Kit

**TK-400-8500-XX-XXX-XX-FTB-85XX-XX-XX**

Screen code \_\_\_\_\_  
 D3 = STN passive screen  
 D4 = TFT active screen

Memory \_\_\_\_\_  
 N10 = 256 MB  
 N12 = 512 MB

Expansion unit \_\_\_\_\_  
 00 = 2-slot module receptacle  
 H = 7-slot module receptacle

Transceiver 1300 nm options  
 8591-1 = 1 transceiver module  
 8591-2 = 2 transceiver modules

Transceiver 850 nm options  
 8590-1 = 1 transceiver module  
 8590-2 = 2 transceiver modules

Model \_\_\_\_\_  
 FTB-8515-1 = Packet Blazer SAN, 1 port  
 FTB-8515-2 = Packet Blazer SAN, 2 ports

## Ordering Model

### FTB-859x Transceivers

FTB-8590 100 MB/s at 850 nm (100-M5-SL-I); LC connectors optical SFP transceiver module for FTB-8515 Packet Blazer SAN

FTB-8591 100 MB/s at 1300 nm (100-SM-LL-I); LC connectors optical SFP transceiver module for FTB-8515 Packet Blazer SAN

## Laser Safety

21 CFR 1040.10  
 IEC 60825-1

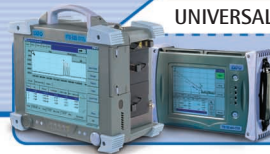
Class I Laser Product  
 Class 1 Laser Product

Find out more about EXFO's extensive line of high-performance portable instruments by visiting our Web site at [www.exfo.com](http://www.exfo.com)



### Rugged Handheld Solutions

- OLTS
- Power Meter
- Light Source
- Talk Set



### UNIVERSAL TEST SYSTEM

- OTDR
- OLTS
- ORL
- Switch

### Optical Fiber

- OSA
- PMD
- Chromatic Dispersion Analyzer
- Multiwavelength Meter

### DWDM Test Systems

### Protocol

- 10/100 and Gigabit Ethernet
- SONET/SDH (DS0 to OC-192c)
- SDH/PDH (64 Kb/s to STM-64c)
- 100 MB/s Fibre Channel

|                            |   |   |  |
|----------------------------|---|---|--|
| CORPORATE HEADQUARTERS     | 465 Godin Avenue  | Vanier (Quebec) G1M 3G7 CANADA  | Tel.: 1 418 683-0211 . Fax: 1 418 683-2170         |
| EXFO AMERICA               | 1201 Richardson Drive, Suite 260  | Richardson TX 75080 USA   | Tel.: 1 800 663-3936 . Fax: 1 972 907-2297         |
| EXFO EUROPE                | Le Dynasteur, 10/12 rue Andras Beck   | 92366 Meudon la Forêt Cedex FRANCE  | Tel.: +33.1.40.83.85.85 . Fax: +33.1.40.83.04.42   |
| EXFO ASIA-PACIFIC          | 151 Chin Swee Road, #03-29 Manhattan House  | SINGAPORE 169876  | Tel.: +65 6333 8241 . Fax: +65 6333 8242           |
| EXFO CHINA                 | Beijing New Century Hotel Office Tower, Room 1754-1755<br>No. 6 Southern Capital Gym Road | Beijing 100044 P. R. China  | Tel.: +86 (10) 6849 2738 . Fax: +86 (10) 6849 2662 |
| TOLL-FREE (USA and Canada) | Tel.: 1 800 663-3936  | <a href="http://www.exfo.com">www.exfo.com</a> • <a href="mailto:info@exfo.com">info@exfo.com</a> |  |

EXFO has made every effort to ensure that the information contained in this specification sheet is accurate. However, we accept no responsibility for any errors or omissions, and we reserve the right to modify design, characteristics and products at any time without obligation. Units of measurement in this document conform to SI standards and practices.

**Contact EXFO for prices and availability or to obtain the phone number of your local EXFO distributor.**  
 For the most recent version of this spec sheet, please go to the EXFO Web site at <http://www.exfo.com/support/techdocs.asp>  
 In case of discrepancy, the Web version takes precedence over any printed literature.  
 All names, trademarks, products and services mentioned are registered or unregistered trademarks of their respective owners.

